

Information for Developers & Builders

Introduction

This guide is designed to provide you with easy to follow advice for the successful installation of the gas mains & service pipes to your development. Additional guides on the installation of gas service ducting, excavation and the correct installation of the various approved meter boxes for each of the service terminations are also available.

Follow this advice will help you achieve a cost effective, efficient and problem free installation of the gas infrastructure to your development.



Before you start

It is essential to prepare a programme of construction that includes the coordination of the mains and service activities in the correct sequence to ensure the utilities to your development are laid in the most effective manner.

All agreed routes must be brought to the final finished levels and care must be taken to ensure that:

- Mains and service routes are clear of all obstacles including any scaffolding;
- In the case of road crossings, a layer of sand at least 250mm thick is provided as pipe surround and road construction must allow for this;
- All surplus materials and spoil is removed;
- Suitably compacted non-corrosive material is used for pipe bedding purposes to avoid the risk of future settlement;
- Hard materials such as bricks, concrete or stone rubble are not used for back filling purposes above gas mains and services;
- Levels are not altered for landscaping purposes; and
- Trees must not be planted over the line of the main when landscaping is carried out.

Surveying and preparing the route

When surveying and preparing the route:

- Obtain plans from other utilities regarding the position of their plant;
- Survey the proposed route to establish the most suitable line, noting features (e.g. surface boxes and marker posts) that could affect the final choice of route;
- Check proposed line of excavation to ensure that changes of direction allow for minimum bend radius for PE pipe;
- Where necessary, prove the route by digging trial holes at appropriate position;
- Decide the point of service entry and mains connection; and mark the most direct line for the service trench, giving consideration to minimising reinstatement requirements; and
- Ensure the route of all mains and services are as per the installation drawings. **Any variation could result in additional costs to your development.**

Gas Mains

In most cases our quotations are based on you pre-excavating all trenches on site. This must be done before SGN Connections arrives on site. The trench bed must also be prepared to receive the pipe. If we arrive on site and the trenches have not been dug the appointment will be cancelled and a later date arranged, this may cause delays to your schedule.

A mains layout plan showing the route, size and connections on the mains on the site will be provided with our initial quotation. It is important that in cases where a single visit quotation has been requested all mains can be laid and that where phasing has been requested the whole phase can be laid. This will ensure we undertake the minimum number of visits to the site and that your costs remain as per the original quotation.

Our quotations are normally based on a one visit approach to lay all mains unless otherwise requested and agreed at the time of the quotation. Additional variations will be charged for – please check your quotations for full details of our conditions.

Please refer to our Data Sheet C130

Surface-mounted meter box

An alternative to laying service pipes by excavating and back filling them directly into the ground is to use appropriate sized service ducts. These are plastic sleeves in which the service pipe will run at a later date. This allows you to excavate and lay the service duct when other ground works are being carried out and insert and connect the service pipes at a later date. The use of service ducts will allow greater flexibility in the programming of the service work since it will then only be necessary for you to excavate at the meter box or service entry point position and the mains connection when the service is connected.

Gas ducting must be yellow in colour, vented appropriately and perforated. Gas marker tape must be laid 200mm above the duct to avoid interference damage to gas pipes. Polyethylene (PE) gas, water or cable pipe must not be used as a duct.

Ducting and trench routes must be laid out as per the gas proposal drawings agreed with SGN Connections.



The correct size service pipe ducting must be installed at the correct depth, ensuring that sufficient room is left at each end of the duct to allow access to make the connections to the main and the service termination point. The mains connection must be left open with sufficient duct exposed to receive the service pipe and you must allow a minimum of 1m at the entry point to allow us to assemble the required fittings.

On pre-excavated work if it is the developer's responsibility to excavate for the meter connections and the connection to the main. Please make reference to the amount of ground excavation required and access around the main. SGN Connections will not excavate any ground on 'pre-excavated' sites. If the excavation is not complete the appointment will be cancelled and an alternative date will be arranged.

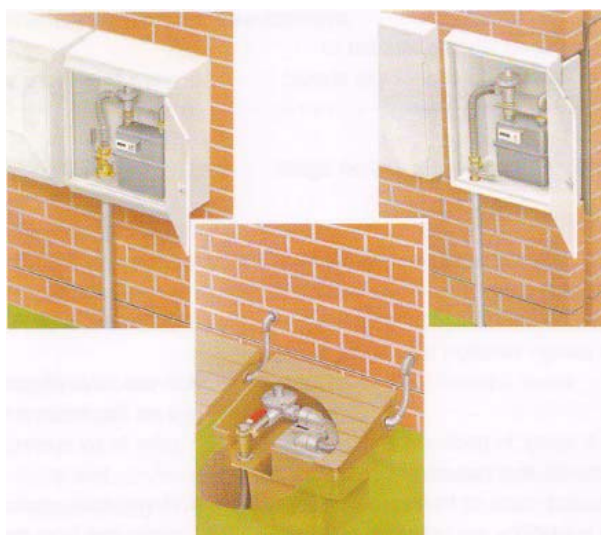
The service pipe or duct must run perpendicular to the gas main, take the shortest practicable route from the main to the property and preferably, terminate in a meter box. The installation must be in accordance with Gas Safety (Installation and Use) Regulations.

In particular note that services cannot be routed through unventilated voids, under load bearing footings, walls or other foundations.

Gas service entry types

Service pipes must terminate with a customer emergency control valve in one of the following positions:

- In an approved meter box (either a built-in, surface-mounted or semi-concealed meter box) on the wall closest to the gas main; or



- At a meter point inside the dwelling or attached/integral garage or store, as close as practicable to an external, above ground entry point.

Useful guidance is available from HSE Books, Legal Series (L56) – Safety In The Installation And Use Of Gas Systems And Appliances covering the Gas Safety (Installation & use) Regulation 1998 – Approved Code of Practice and Guidance (ISBN 0 7176 1635 5)

Please refer to our Data Sheets C180 – C150

Where the building construction involves a concrete raft, you must undertake to leave a minimum of 375mm clearance above the concrete raft and finished ground level. If this is not possible you must provide a slot or vertical channel in the raft to allow for the safe installation of the gas service riser pipe. If this is not done, SGN Connections will not break out the concrete raft footings to provide a slot for the service pipe access, the appointment will be cancelled and a later date will be arranged for the gas connection work.

Corbelled Walls

It is possible to install a built-in or surface-mounted meter box or standard house entry tee with classically designed corbelled wall construction. However, the base of the meter box or house entry must be two courses above the top of the corbelled wall to ensure correct installation.

Records

SGN Connections will make and retain all records of the gas network. However, it is important for you to make your own construction records of the new system. It is essential that records of the system are retained on site to prevent any interference or damage to the gas network or any other utility apparatus.



Call Off Procedure

To help SGN Connections provide a trouble free connection service, you need to allow for the following when calling-off mains and services:

- A minimum of three weeks notice should be given when requesting mains to be laid in association with the contract;
- A minimum of three weeks notice should be given when calling-off groups of services associated with the contract;
- A full postal address must be used when a request to schedule services is made. Where appropriate this should be linked to the plot number previously given;
- Contact details for the site developer/builder or their agent must be given;
- Confirmation that the works required are in accordance with the quotation i.e. the route of the mains and services and meter positions are as stated. Additional requirements may be subject to cost and/or design variation leading to delays in scheduling;
- Confirmation that the site is ready, in particular if you have elected to excavate and backfill trenches on site they must be excavated along the quoted route, to the correct depth by the scheduled date (such quotations are prepared on the basis of open trenches and not insertion through ducts). Even slight changes to the quoted route may be subject to cost and/or design variation leading to delays in scheduling. You may also be charged for an aborted visit where work could not take place due to site conditions within your control.

Scaffolding

When you contact us for the installation of gas mains and/or services all the areas in which we need to work must be clear of obstacles, including scaffolding.

SGN Connections and its approved contractors are not permitted to work under or in close proximity to any scaffolding. We will abort any visit where clear access is not possible or scaffolding remains and you may be charged for additional visits. Please ensure the area is free of obstacles before we arrive on site to avoid any problems.

Installing Meters

When you are ready to have the gas supply in the property connected, you will need to contact a Gas Supplier/Shipper to set up a supply contract and arrange for the installation of the gas meter. A list of suppliers is available from Energywatch on **0845 9060708** or at www.energywatch.org.uk

Summary

5 ways to ensure your development keeps to schedule:

1. Ensure the quotation you request from us correctly reflects your plans.
2. Stick exactly to the route, size, mains connection and meter points stated in the quotation
3. If you have elected to pre-excavate, make sure this is done to the correct specification prior to us arriving.
4. Remove all scaffolding and any other obstacles from the area in which we are to work.
5. Arrange for your meter(s) to be installed through your agreed gas supplier.

LEAKAGE FROM GAS PIPES

What to do if damage occurs or a gas smell is detected:

- Inform SGN on 0800 111 999
- Enforce "No Smoking"
- Remove naked flames or heat
- Inform the supervisor
- Prevent any approach by the public
- Do not attempt repairs
- Assist SGN engineers or emergency services as requested

FOR GAS ESCAPES TELEPHONE 0800-111-999